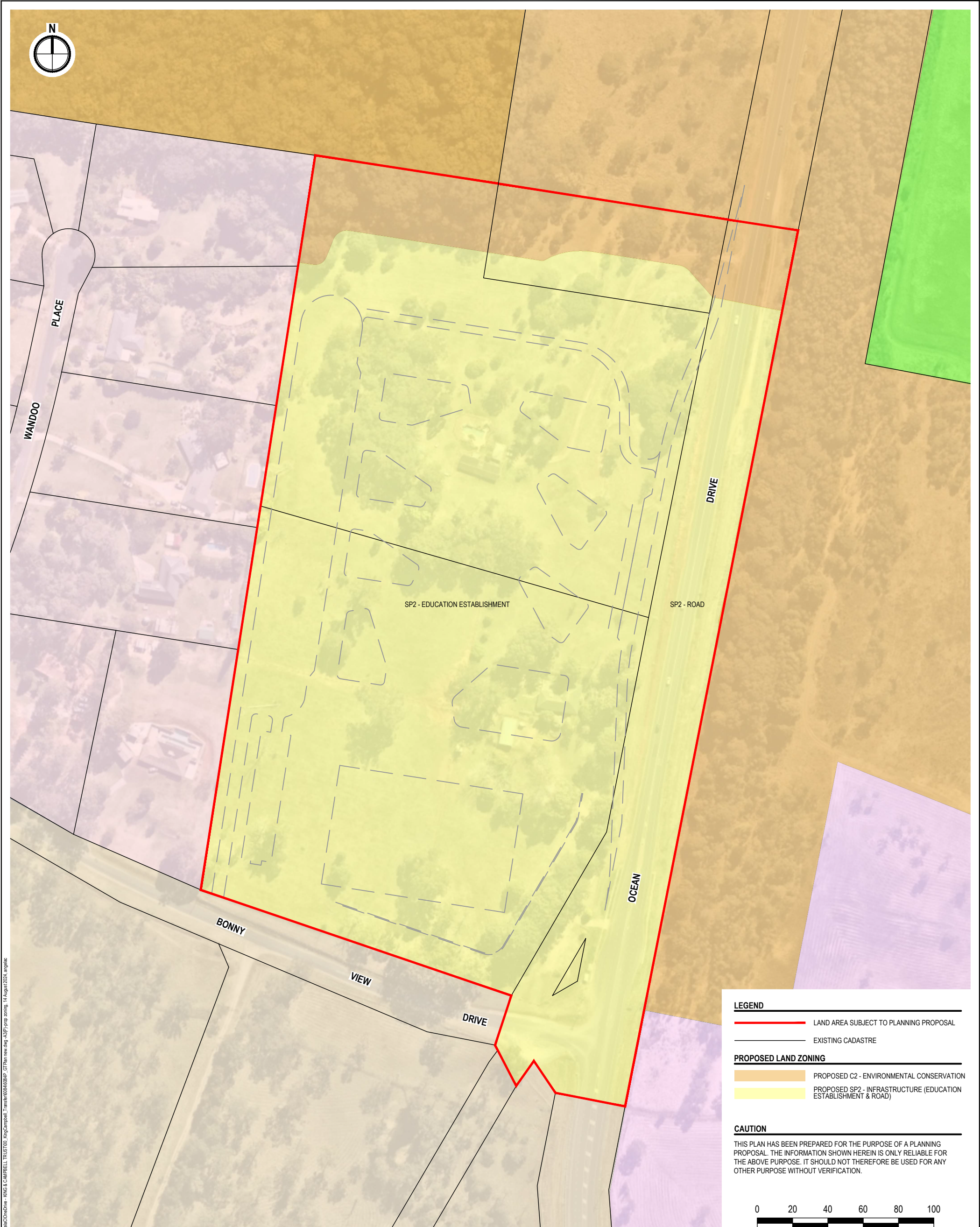


K:\C-REF-Customer\Angelo\Ondra - KING & CAMPBELL TRUST\03_KingCampbell_Traffic\6084\6084P_GTPlan new.dwg - A3P\plotting.pmp, 14 August 2024, angelo

NOTE: DO NOT SCALE OFF DRAWINGS. USE FIGURED DIMENSIONS ONLY. REPORT ANY DISCREPANCIES TO THE AUTHOR. THIS DRAWING, BEING THE PROPERTY OF KING & CAMPBELL PTY LTD, IS PROTECTED BY COPYRIGHT AND MUST NOT BE USED, REPRODUCED OR COPIED WHOLLY OR IN PART WITHOUT THE WRITTEN PERMISSION OF KING & CAMPBELL PTY LTD.
© King & Campbell Pty Ltd

<div>KING + CAMPBELL</div> <div>King & Campbell Pty Ltd www.kingcampbell.com.au A: PO Box 243 Port Macquarie NSW 2444</div> <div>T: 02 6586 2555 F: 02 6583 4064 E: info@kingcampbell.com.au</div>			REV.	DATE	DESCRIPTION	BY	PROJECT NO:	DRAWING TITLE: EXISTING ZONE PLAN			
			A	08.12.2021	ISSUED FOR PLANNING PROPOSAL	AJC	DA NO.:				
			B	14.08.2024	ISSUED FOLLOWING GATEWAY DETERMINATION	AJC	DESIGNED BY:	PROJECT:	PLANNING PROPOSAL BONNY HILLS CATHOLIC HIGH SCHOOL, LOTS 6 & 7 DP594792 & LOT 6 DP594793, CORNER BONNY VIEW DRIVE & OCEAN DRIVE, BONNY HILLS		
							DRAWN BY:				
							CHECKED BY:	CLIENT:	ST AGNES CATHOLIC PARISH		
							DATUM:				
									DRAWING NO:	SHEET:	REVISION:
									6084P_GTPlan new	1 OF 2	B



K:\C-REF-C\Urban\Agencies\Condo\Draw - KING & CAMPBELL TRUST\03_KingCampbell_Traffic\6084\6084P_GTPlan new.dwg A3P\prop zoning, 14 August 2024.mxd

NOTE: DO NOT SCALE OFF DRAWINGS. USE FIGURED DIMENSIONS ONLY. REPORT ANY DISCREPANCIES TO THE AUTHOR. THIS DRAWING, BEING THE PROPERTY OF KING & CAMPBELL PTY LTD, IS PROTECTED BY COPYRIGHT AND MUST NOT BE USED, REPRODUCED OR COPIED WHOLLY OR IN PART WITHOUT THE WRITTEN PERMISSION OF KING & CAMPBELL PTY LTD.
© King & Campbell Pty Ltd

<div>KING + CAMPBELL</div> <div>King & Campbell Pty Ltd www.kingcampbell.com.au A: PO Box 243 Port Macquarie NSW 2444</div> <div>T: 02 6586 2555 F: 02 6583 4064 E: info@kingcampbell.com.au</div>	REV.	DATE	DESCRIPTION	BY	PROJECT NO:	6084	DRAWING TITLE:	PROPOSED ZONE PLAN			
	A	08.12.2021	ISSUED FOR PLANNING PROPOSAL	AJC	DA NO.:	-					
	B	10.02.2022	ISSUED FOR PLANNING PROPOSAL	AJC	DESIGNED BY:	-	PROJECT:	PLANNING PROPOSAL BONNY HILLS CATHOLIC HIGH SCHOOL, LOTS 6 & 7 DP594792 & LOT 6 DP594793, CORNER BONNY VIEW DRIVE & OCEAN DRIVE, BONNY HILLS			
	C	08.02.2024	ISSUED FOR PLANNING PROPOSAL	SMN	DRAWN BY:	AJC					
	D	13.05.2024	ISSUED FOR PLANNING PROPOSAL	SMN	CHECKED BY:	-	CLIENT:	ST AGNES CATHOLIC PARISH			
	E	14.08.2024	ISSUED FOLLOWING GATEWAY DETERMINATION	AJC	DATUM:	AHD					
								DRAWING NO:	6084P_GTPlan new	SHEET:	2 OF 2
								REVISION:			E